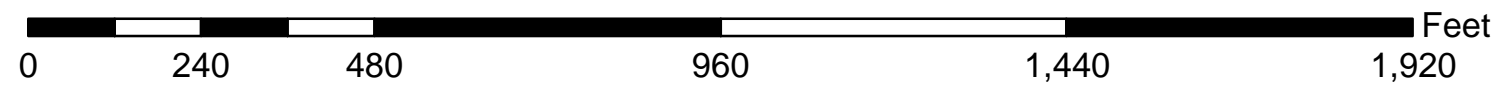
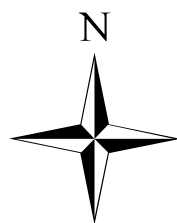


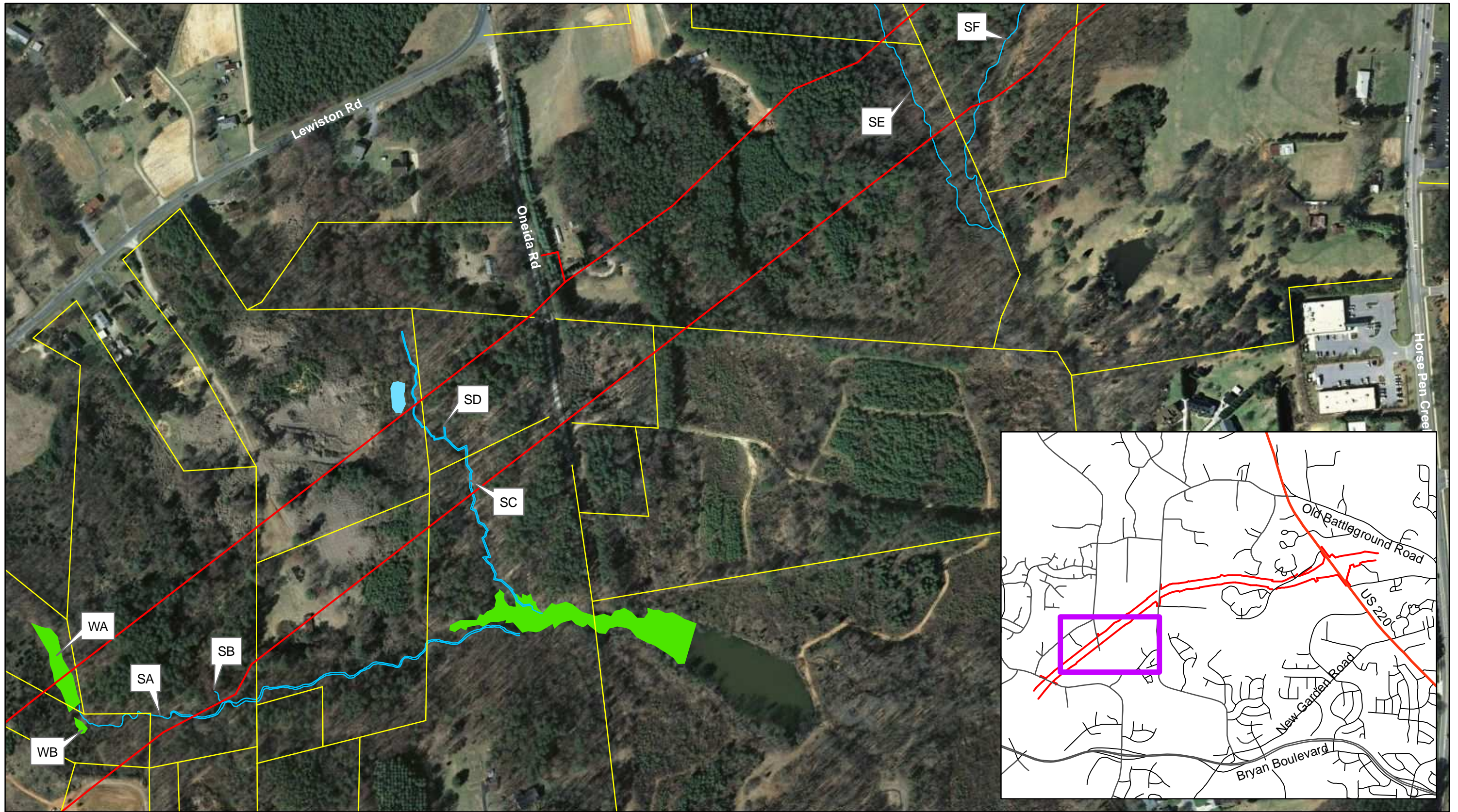
U-2524C Guilford County: Jurisdictional Features

Greensboro Western Loop from North of SR 2176 (Bryan Boulevard) to US 220 (Battleground Avenue)

Sheet 1 of 5



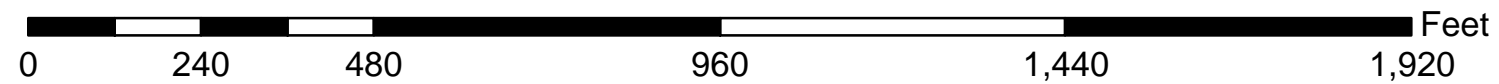
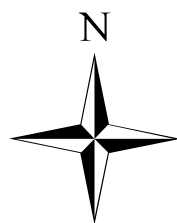
- Project Boundary
- Parcels
- Streams
- Wetlands
- Ponds



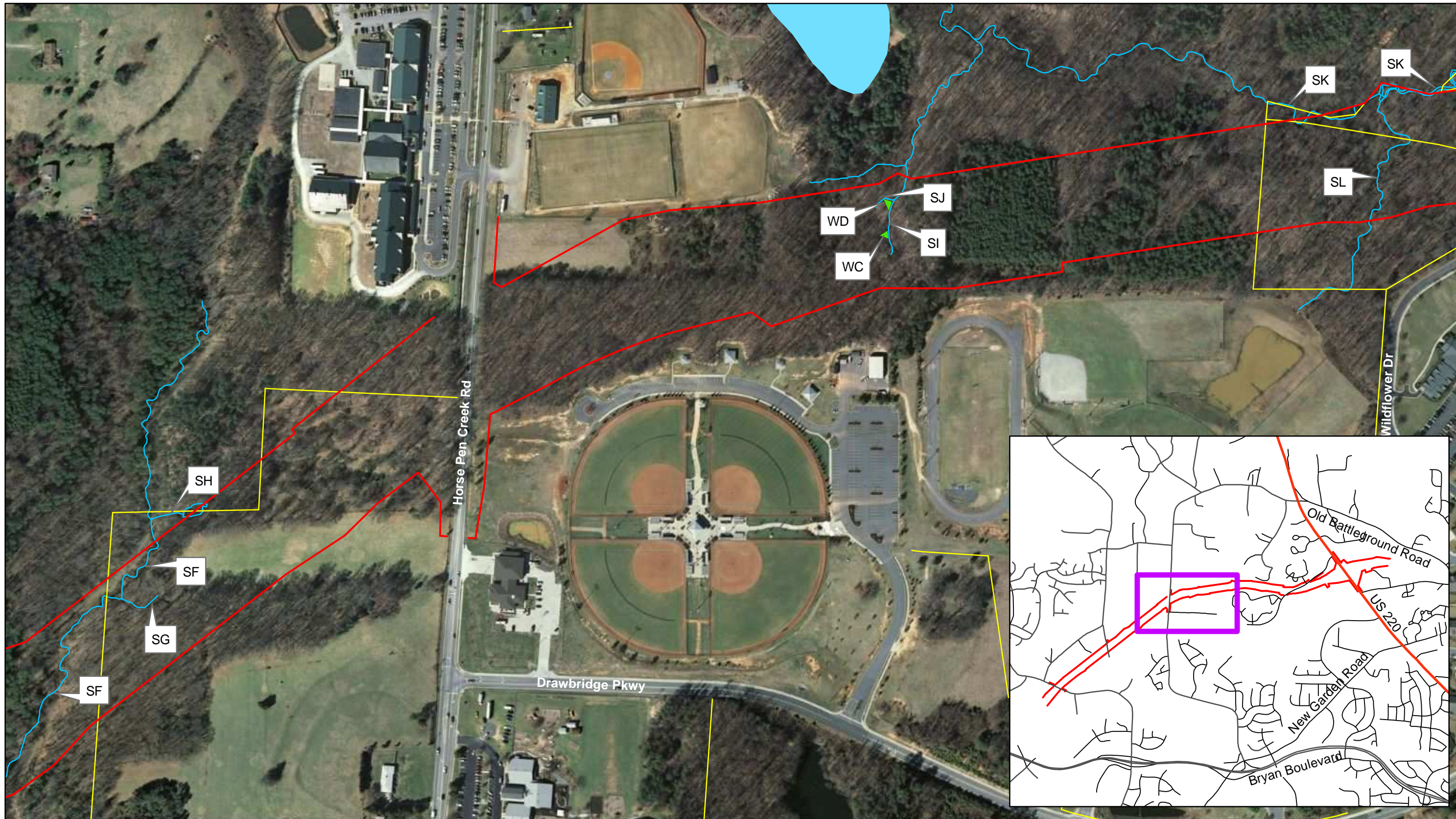
U-2524C Guilford County: Jurisdictional Features

Greensboro Western Loop from North of SR 2176 (Bryan Boulevard) to US 220 (Battleground Avenue)

Sheet 2 of 5



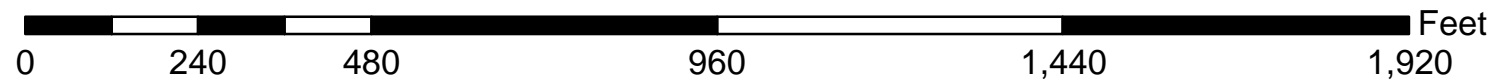
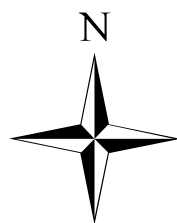
- Project Boundary
- Parcels
- Streams
- Wetlands
- Ponds



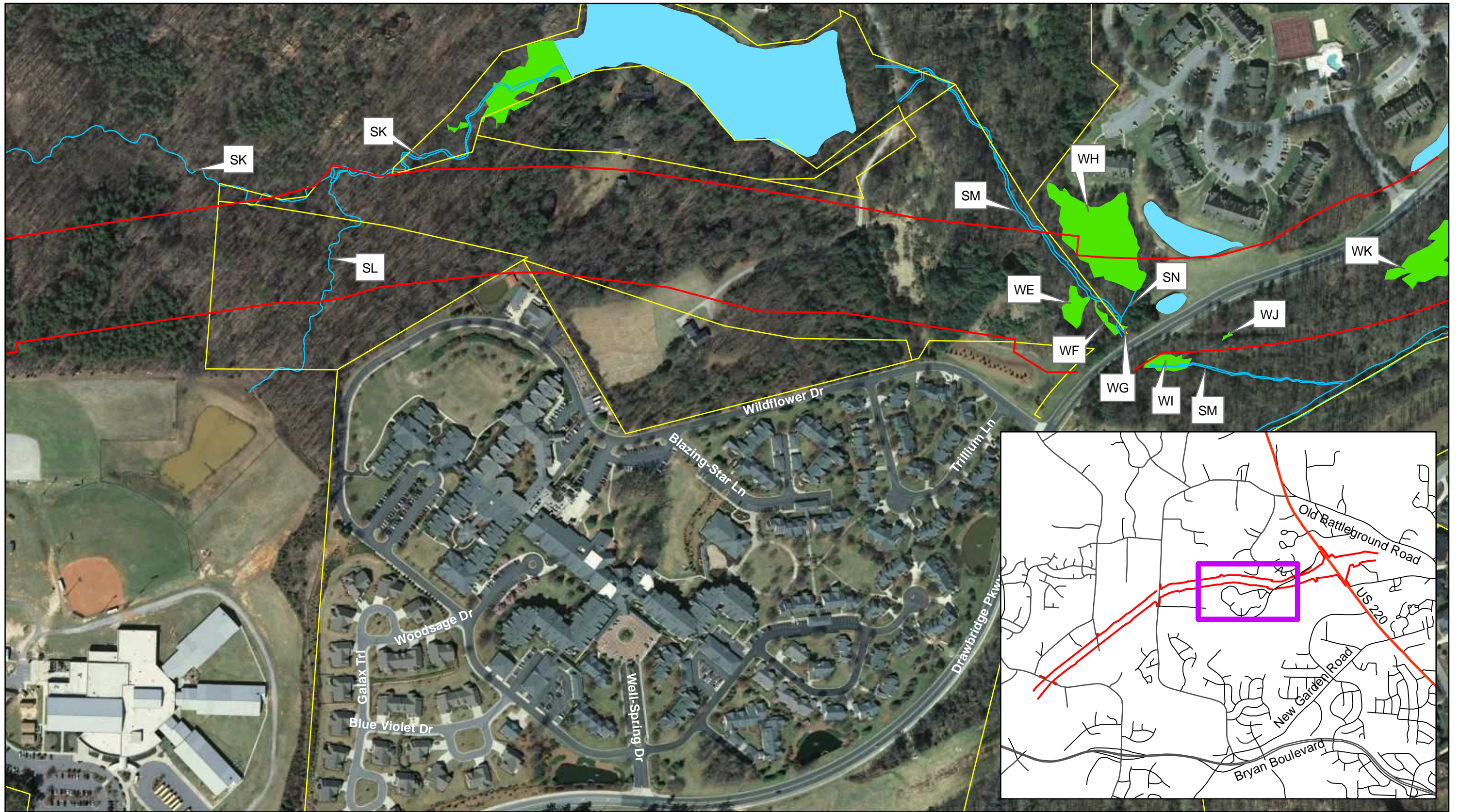
U-2524C Guilford County: Jurisdictional Features

Greensboro Western Loop from North of SR 2176 (Bryan Boulevard) to US 220 (Battleground Avenue)

Sheet 3 of 5



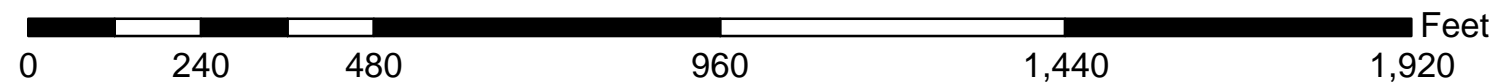
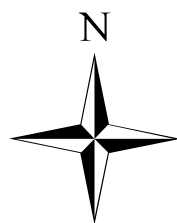
- Project Boundary
- Parcels
- Streams
- Wetlands
- Ponds



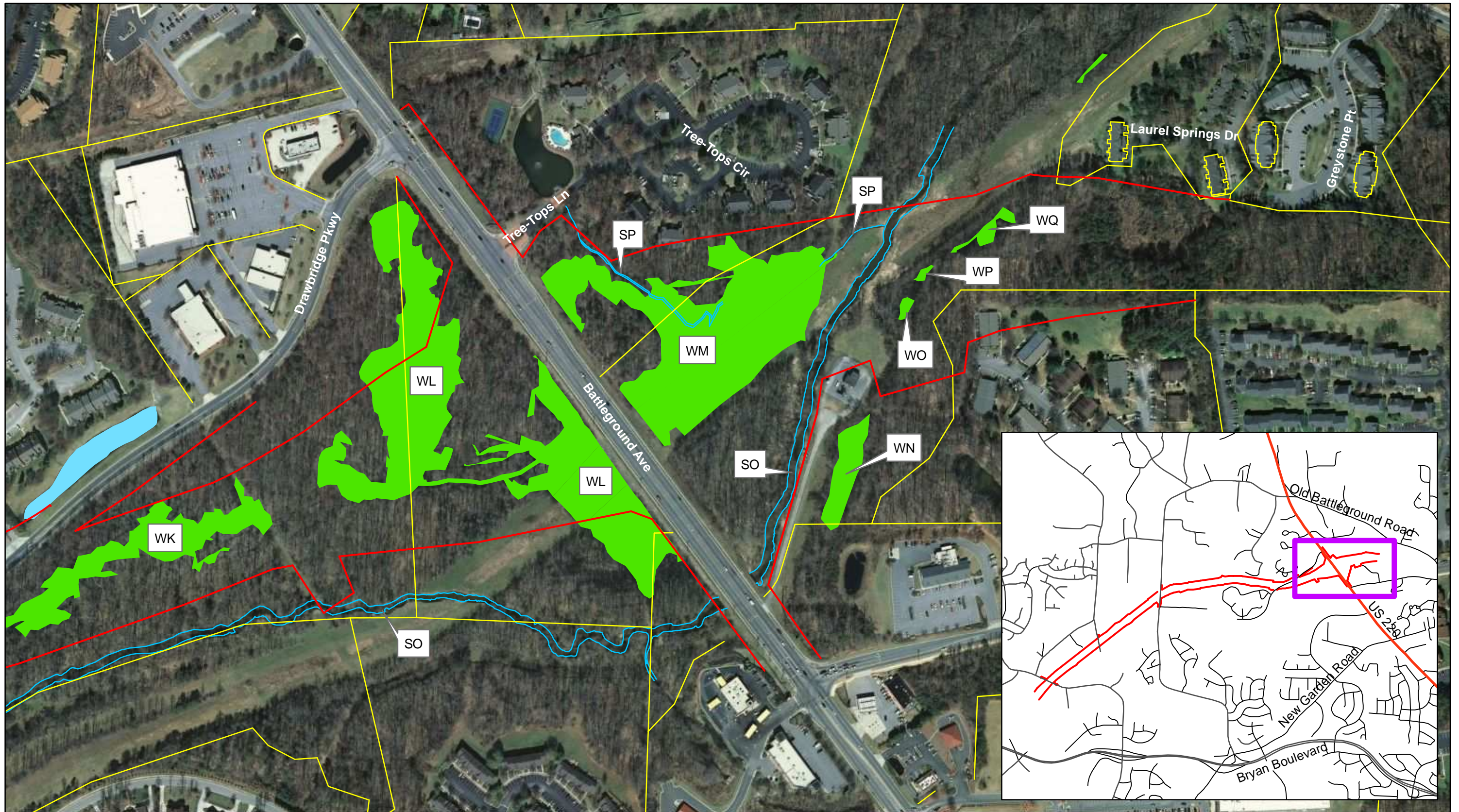
U-2524C Guilford County: Jurisdictional Features

Greensboro Western Loop from North of SR 2176 (Bryan Boulevard) to US 220 (Battleground Avenue)

Sheet 4 of 5



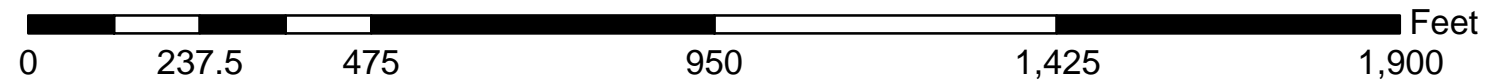
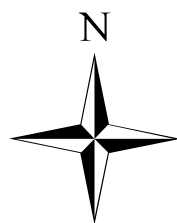
- Project Boundary
- Parcels
- Streams
- Wetlands
- Ponds



U-2524C Guilford County: Jurisdictional Features

Greensboro Western Loop from North of SR 2176 (Bryan Boulevard) to US 220 (Battleground Avenue)

Sheet 5 of 5



- Project Boundary
- Parcels
- Streams
- Wetlands
- Ponds